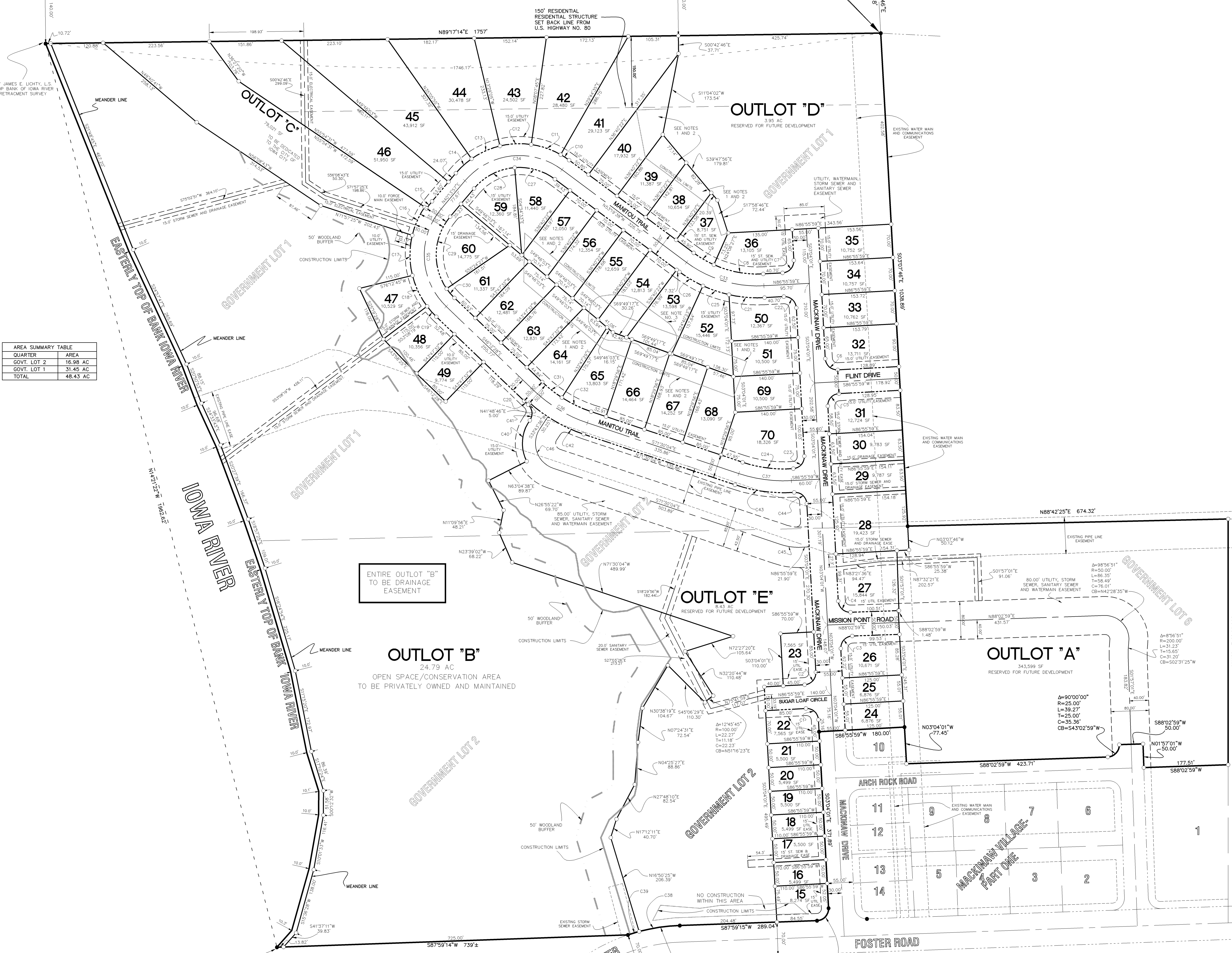


NORTHWEST CORNER OF SECTION 4-T79N-R6W OF THE FIFTH P.M. FOUND 1" PIPE BOOK 36 AT PAGE 71

S89°18'10"W  
2501.57'

CENTERLINE U.S. HIGHWAY NO. 80

NORTH 1/4 CORNER OF SECTION 4-T79N-R6W OF THE FIFTH P.M. FOUND 5/8" PIN W. L.S. 8165 CAP BOOK 36 AT PAGE 126



AREA SUMMARY TABLE

QUARTER	AREA
GOVT. LOT 2	16.98 AC
GOVT. LOT 1	31.45 AC
TOTAL	48.43 AC

CURVE SEGMENT TABLE

CURVE	DELTA	RADIUS	LENGTH	TANGENT	CHORD	BEARING
C1	90°00'00"	25.00'	39.27'	25.00'	35.36'	S48°04'01"E
C2	90°00'00"	25.00'	39.27'	25.00'	35.36'	S41°55'59"W
C3	91°07'00"	25.00'	39.76'	25.49'	35.70'	S42°29'29"W
C4	88°53'00"	25.00'	38.78'	24.52'	35.01'	N47°30'31"W
C5	90°00'00"	25.00'	39.27'	25.00'	35.36'	N41°55'59"E
C6	90°00'00"	25.00'	39.27'	25.00'	35.36'	N48°04'01"W
C7	90°00'00"	25.00'	39.27'	25.00'	35.36'	N41°55'59"E
C8	271°0'28"	225.00'	106.71'	54.38'	105.72'	N79°28'47"W
C9	123°3'55"	225.00'	49.34'	24.77'	49.25'	N59°36'35"W
C10	6°55'48"	175.00'	21.17'	10.60'	21.15'	N56°47'31"W
C11	21°36'50"	175.00'	66.02'	33.40'	65.63'	N71°03'50"W
C12	21°36'50"	175.00'	66.02'	33.40'	65.63'	N87°19'20"E
C13	21°36'50"	175.00'	66.02'	33.40'	65.63'	N65°42'30"E
C14	144°0'08"	175.00'	44.80'	22.52'	44.68'	N47°34'01"E
C15	6°08'28"	175.00'	18.76'	9.39'	18.75'	N37°09'43"E
C16	20°45'35"	180.00'	65.22'	32.97'	64.86'	N23°42'42"E
C17	27°07'10"	180.00'	85.20'	43.41'	84.40'	S00°13'40"E
C18	23°04'26"	180.00'	72.49'	36.74'	72.00'	S25°19'28"E
C19	9°20'47"	180.00'	29.36'	14.71'	29.33'	S41°32'04"E
C20	1°58'47"	330.00'	11.40'	5.70'	11.40'	S47°11'51"E
C21	15°40'34"	275.00'	75.24'	37.86'	75.01'	N85°13'44"W
C22	90°00'00"	25.00'	39.27'	25.00'	35.36'	N48°04'01"W
C23	88°50'40"	25.00'	38.77'	24.50'	35.00'	N41°21'19"E
C24	22°43'17"	272.94'	108.24'	54.84'	107.53'	N82°51'42"W
C25	12°03'50"	275.00'	57.90'	29.06'	57.80'	S71°21'32"E
C26	12°00'00"	275.00'	57.60'	28.90'	57.49'	S59°19'37"E
C27	41°14'55"	125.00'	89.99'	47.04'	88.06'	S73°57'05"E
C28	45°11'30"	125.00'	98.59'	52.02'	96.06'	S62°49'42"W
C29	74°49'31"	125.00'	163.24'	95.61'	151.89'	S02°49'12"W
C30	11°36'54"	125.00'	25.34'	12.71'	25.30'	S40°24'01"E
C31	11°00'04"	275.00'	29.36'	14.71'	29.33'	S41°32'04"E
C32	14°17'32"	275.00'	68.60'	34.48'	68.42'	S64°21'18"E
C33	39°44'23"	250.00'	173.40'	90.35'	169.94'	N73°11'49"W
C34	86°26'25"	150.00'	226.30'	140.96'	205.44'	N83°27'10"E
C35	86°26'25"	150.00'	226.30'	140.96'	205.44'	N02°58'15"W
C36	25°17'36"	300.00'	132.44'	67.31'	131.36'	S58°51'16"E
C37	21°33'57"	297.94'	112.14'	56.74'	111.48'	S82°17'02"E
C38	12°52'04"	385.00'	86.47'	43.42'	86.28'	S81°33'14"W
C39	3°40'47"	385.00'	24.73'	12.37'	24.72'	S73°16'48"W
C40	62°38'55"	83.00'	90.75'	50.51'	86.30'	N04°24'06"E
C41	83°54'48"	25.00'	36.61'	22.48'	33.43'	N06°13'50"W
C42	23°18'49"	325.00'	132.24'	67.05'	131.33'	S59°50'39"W
C43	22°23'21"	322.94'	126.19'	63.91'	125.39'	N82°41'44"W
C44	90°49'24"	25.00'	39.63'	25.36'	35.61'	N48°28'43"W
C45	18°10'51"	122.50'	38.87'	19.60'	38.71'	S80°35'29"E
C46	105°13'40"	55.50'	101.93'	72.63'	88.20'	S18°53'14"E

PIN SET BY JAMES E. LIGHTY, L.S. ON EAST TOP BANK OF IOWA RIVER AS PER RETRACEMENT SURVEY

Δ=16°32'51"  
R=365.00'  
L=111.19'  
T=55.99'  
C=110.89'  
CB=579°42'50"W

Δ=91°03'15"  
R=25.00'  
L=39.73'  
T=25.46'  
C=35.68'  
CB=542°27'37"W

NOTE:  
LOT 15 SHALL NOT HAVE DIRECT VEHICULAR ACCESS TO FOSTER ROAD.