

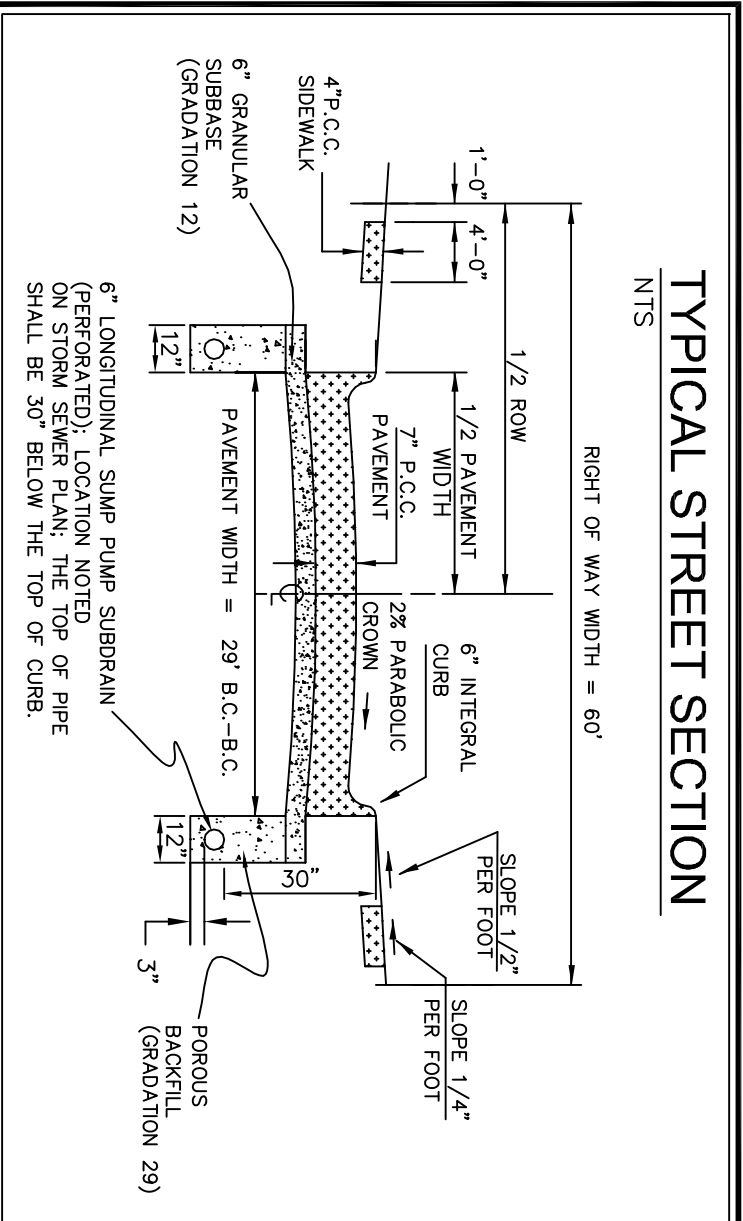
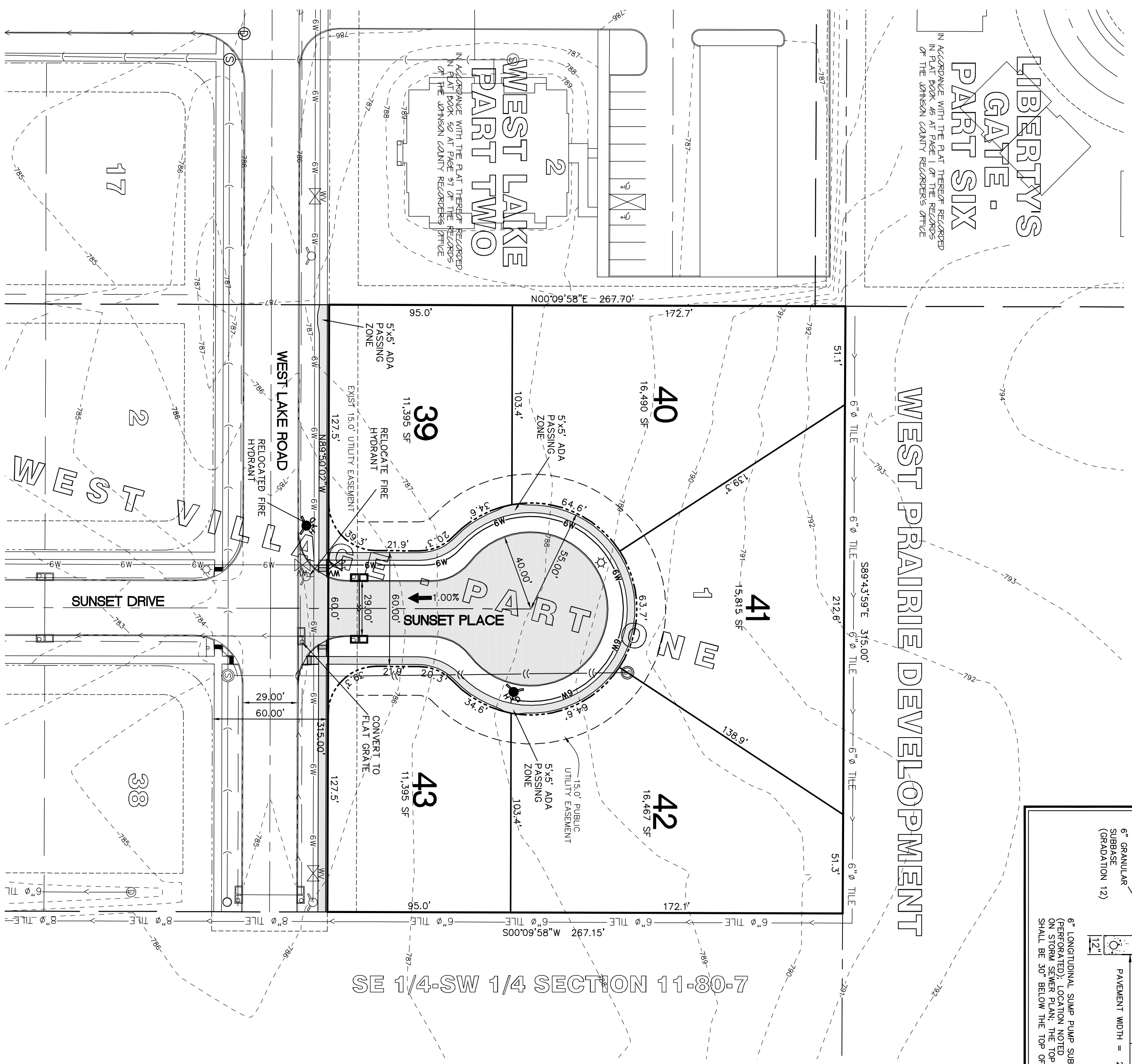
# PRELIMINARY PLAT WEST VILLAGE PART 3 NORTH LIBERTY, IOWA

PLAT PREPARED BY:  
MMS CONSULTANTS, INC.  
1917 S. GILBERT STREET  
IOWA CITY, IA 52240

OWNER/SUBDIVIDER:  
ROBSON HOMES, INC.  
5901 WILLIAMS BLVD SW  
CEDAR RAPIDS, IA 52404

**LIBERTY'S  
GATE -  
PART SIX**

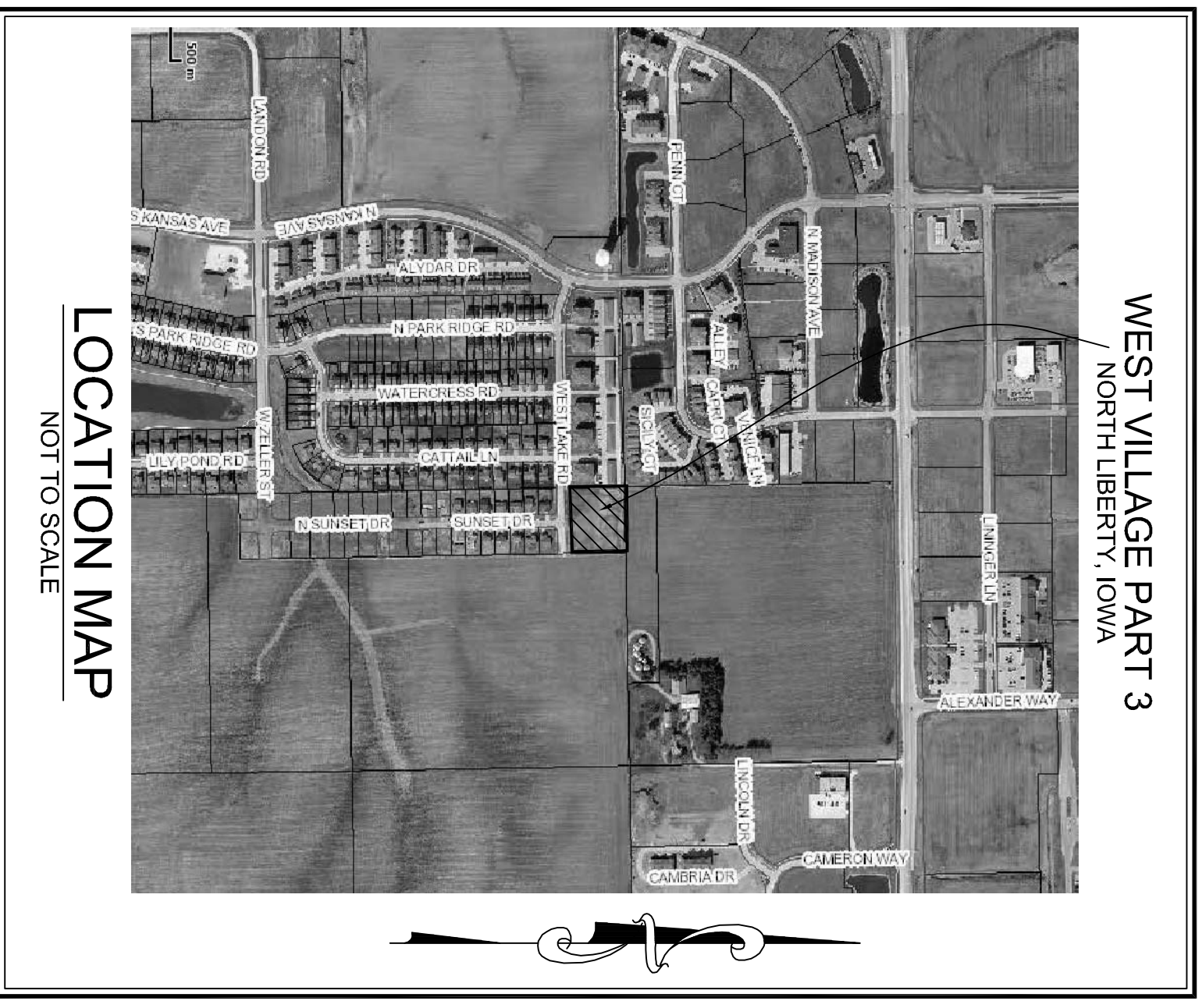
IN ACCORDANCE WITH THE PLAT THEREOF RECORDED  
IN PLAT BOOK 49 AT PAGE 1 OF THE RECORDS  
OF THE JOHNSON COUNTY RECORDER'S OFFICE



REZONE PARCEL FROM ID TO RD-10  
LOT 1, WEST VILLAGE - PART 1, TO NORTH  
LIBERTY, JOHNSON COUNTY, IOWA IN  
ACCORDANCE WITH THE PLAT RECORDED IN  
BOOK 54, AT PAGE 156, OF THE RECORDS  
OF THE JOHNSON COUNTY RECORDER'S  
OFFICE CONTAINING 1.93 ACRES, AND  
SUBJECT TO EASEMENTS AND RESTRICTIONS  
OF RECORD.

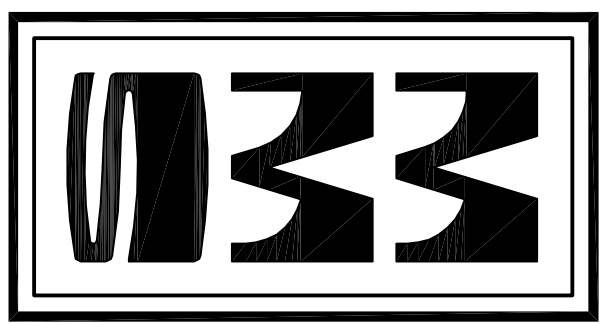
STANDARD LEGEND AND NOTES	
	PROPERTY &/OR BOUNDARY LINES
	LONGITUDINAL SECTION LINES
	EXISTING RIGHT-OF-WAY LINES
	EXISTING CENTER LINES
	LOT LINES INTERNAL
	LOT LINES, PLATTED OR BY DEED
	PROPOSED EASEMENT LINES
	EXISTING EASEMENT LINES
	BENCHMARK
	RECORDED DIMENSIONS
	CURVE SEGMENT NUMBER
	EXISTING POWER POLE
	PROPOSED POWER POLE
	EXISTING POWER POLE W/DROP
	PROPOSED POWER POLE W/DROP
	EXISTING POWER POLE W/LIGHT
	PROPOSED POWER POLE W/LIGHT
	EXISTING LIGHT POLE
	PROPOSED LIGHT POLE
	EXISTING SANITARY MANHOLE
	PROPOSED SANITARY MANHOLE
	EXISTING FIRE HYDRANT
	PROPOSED FIRE HYDRANT
	EXISTING WATER VALVE
	PROPOSED WATER VALVE
	EXISTING DRAINAGE MANHOLE
	PROPOSED DRAINAGE MANHOLE
	EXISTING CURB INLET
	PROPOSED CURB INLET
	EXISTING SANITARY SEWER
	PROPOSED SANITARY SEWER
	EXISTING STORM SEWER
	PROPOSED STORM SEWER
	EXISTING WATER LINES
	PROPOSED WATER LINES
	EXISTING TELEPHONE LINES
	PROPOSED TELEPHONE LINES
	EXISTING GAS LINES
	PROPOSED GAS LINES
	CONTOUR LINES (1' INTERVAL)
	EXISTING GROUND
	EXISTING GROUND
	EXISTING TREE LINE
	EXISTING EVERGREEN TREES & SHRUBS
	EXISTING DECIDUOUS TREE & SHRUB

NOTE:  
1. LOTS 39 AND 43 SHALL NOT HAVE ACCESS TO WEST LAKE ROAD



**WEST VILLAGE PART 3  
NORTH LIBERTY, IOWA**

**LOCATION MAP  
NOT TO SCALE**



CIVIL ENGINEERS  
LAND PLANNERS  
LAND SURVEYORS  
LANDSCAPE ARCHITECTS  
ENVIRONMENTAL SPECIALISTS

1917 S. GILBERT ST.  
IOWA CITY, IOWA 52240  
(319) 351-8282  
[www.mmsconsultants.net](http://www.mmsconsultants.net)

Date: 02-20-13  
Revision: PER CITY COMMENTS -JDM

**PRELIMINARY PLAT**

**WEST VILLAGE  
PART 3  
NORTH LIBERTY  
JOHNSON COUNTY  
IOWA**

**MMS CONSULTANTS, INC.**

Date: 02-01-13  
Designed by: DAM  
Drawn by: JDM  
Checked by: DAM  
Project No.: IOWA CITY  
6818198

Scale: 1"=40'  
Sheet No.: 1